



PRAME (clone QR005)

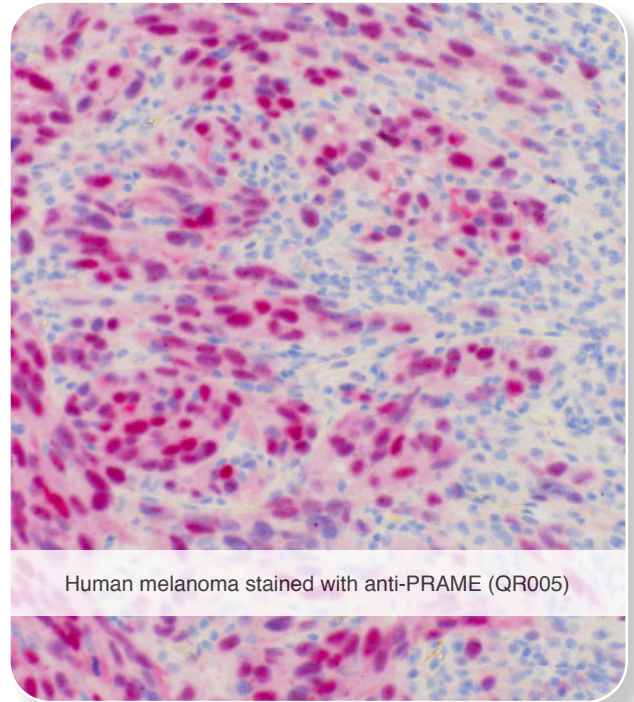
Rabbit Monoclonals - Highly specific melanoma marker

PRAME (Preferentially expressed antigen in melanoma) is a tumor-associated antigen that is preferentially expressed in human melanomas and that is recognized by cytolytic T lymphocytes. Normal tissues show low or no expression except testis, ovary, placenta, adrenals and endometrium. Therefore, it is called a member of the family of cancer testis antigens.

PRAME is also expressed in malignant cells, including leukaemias, Hodgkin's lymphoma and breast cancer. This antibody may be used as melanoma marker to differentiate benign from malign tumors. [1-3]

Literature:

- [1] Ikeda H, Lethé B, Lehmann F *et al.* (1997). *Immunity*. 6(2):199-208.
- [2] Lezcano C, Jungbluth AA, Nehal KS *et al.* (2018). *Am J Surg Pathol*. 42(11):1456-1465.
- [3] Nettersheim D, Arndt I, Sharma R *et al.* (2016). *Br J Cancer*. 115(4):454-464.



Human melanoma stained with anti-PRAME (QR005)

Order information:

Antibody	Catalog number	Format
PRAME (QR005)	C-P003-01	100 µl, concentrate
PRAME (QR005)	C-P003-05	500 µl, concentrate
PRAME (QR005)	C-P003-10	1 ml, concentrate
PRAME (QR005)	P-P003-10	1 ml, ready-to-use
PRAME (QR005)	P-P003-30	3 ml, ready-to-use
PRAME (QR005)	P-P003-70	7 ml, ready-to-use

Take a look at our other Rabbit Monoclonals: **PD-L1 (QR1)**, **PD-1 (QR2)**, **Her2/Neu (QR3)**, **CD3e (QR4)** and others. Please contact our service team for further information.

**Research use only (RUO) -
IVD validation in progress**